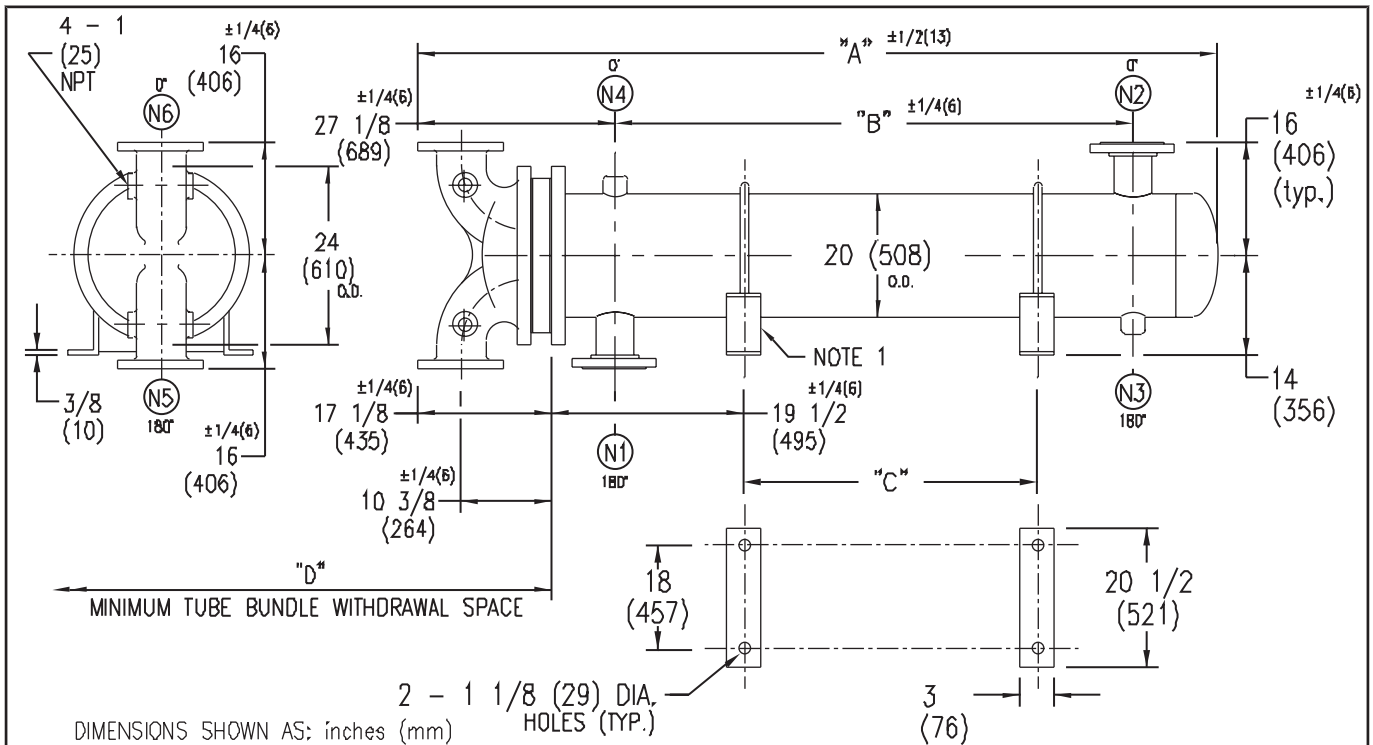


ARMSTRONG®



EXCHANGER SIZE *-BAFFLE SPACING	DIMENSIONS											
	A		B		C		D		N1		N2	
	inches	mm	inches	mm	inches	mm	inches	mm	inches	mm	inches	mm
W-204-2*-2	67 1/8	1705	28 1/4	718	11 1/2	292	51	1295	10	254	10	254
W-205-2*-2	79 1/8	2010	40 1/4	1022	23 1/2	597	63	1600	10	254	10	254
W-206-2*-2	91 1/8	2315	52 1/4	1327	35 1/2	902	75	1905	10	254	10	254
W-207-2*-2	103 1/8	2619	64 1/4	1632	47 1/2	1207	87	2210	10	254	10	254
W-208-2*-2	115 1/8	2924	76 1/4	1937	59 1/2	1511	99	2515	10	254	10	254
W-209-2*-2	127 1/8	3229	88 1/4	2242	71 1/2	1816	111	2819	10	254	10	254
W-2010-2*-2	139 1/8	3534	100 1/4	2546	83 1/2	2121	123	3124	10	254	10	254
W-2011-2*-2	151 1/8	3839	112 1/4	2851	95 1/2	2426	135	3429	10	254	10	254
W-2012-2*-2	163 1/8	4143	124 1/4	3156	107 1/2	2731	147	3734	10	254	10	254
W-2013-2*-2	175 1/8	4448	136 1/4	3461	119 1/2	3035	159	4039	10	254	10	254
W-2014-2*-2	187 1/8	4753	148 1/4	3766	131 1/2	3340	171	4343	10	254	10	254
W-2015-2*-2	199 1/8	5058	160 1/4	4070	143 1/2	3645	183	4648	10	254	10	254

NOZZLE SCHEDULE				
SERVICE	MARK	SHELL SIDE	MARK	TUBE SIDE
INLET	N1	AS PER TABLE	N5	8 (203) FLG
OUTLET	N2	AS PER TABLE	N6	8 (203) FLG
DRAIN	N3	1/2 (13) NPT		
VENT	N4	3/4 (19) NPT		

NOTES: 1. SUPPORTS SUPPLIED ONLY IF SPECIFIED ON ORDER.
 2. NOZZLE SIZES SHOWN ARE RECOMMENDED FOR MAX. EXCHANGER LIFE, NO EXTERNAL FORCES APPLY.
 3. FABRICATED TO ASME CODE SECTION VIII DIVISION 1 AND LATEST ADDENDA.
 4. DRAWING IS NOT TO SCALE.
 5. ALL DIM'S ±1/8 (3) UNLESS OTHERWISE SHOWN.

DESIGN CONDITIONS				
	SHELL		TUBES	
DESIGN PRESSURE	150 PSIG	1034 KPa	150 PSIG	1034 KPa
DESIGN TEMPERATURE	375 °F	191 °C	375 °F	191 °C
MIN. DESIGN METAL TEMP.	40 °F	4.4 °C	40 °F	4.4 °C
HYDRO. TEST PRESSURE	225 PSIG	1551 KPa	300 PSIG	2068 KPa
CONTENTS	WATER		WATER	

CUSTOMER: _____
 LOCATION: _____
 ENGINEER: _____
 ORDER No.: _____
 PROJECT/JOB: _____
 LOCATION: _____
 TAG: _____ (QUOTE # _____)

TITLE G.A. 150 LB. W SERIES HEAT EXCHANGERS	A R M S T R O N G				NUMBER W-20-2P-2-(10)	REV. A 2001 J.R.
DATE: 12 / 01 / 94 BY: D.C.R.	TORONTO - CANADA TEL : (416) 755-2291	MONTREAL - CANADA TEL : (514) 421-2424	BUFFALO - N. Y. TEL : (716) 693-8813	COLCHESTER - U.K. TEL : (44) 120-857-9491		