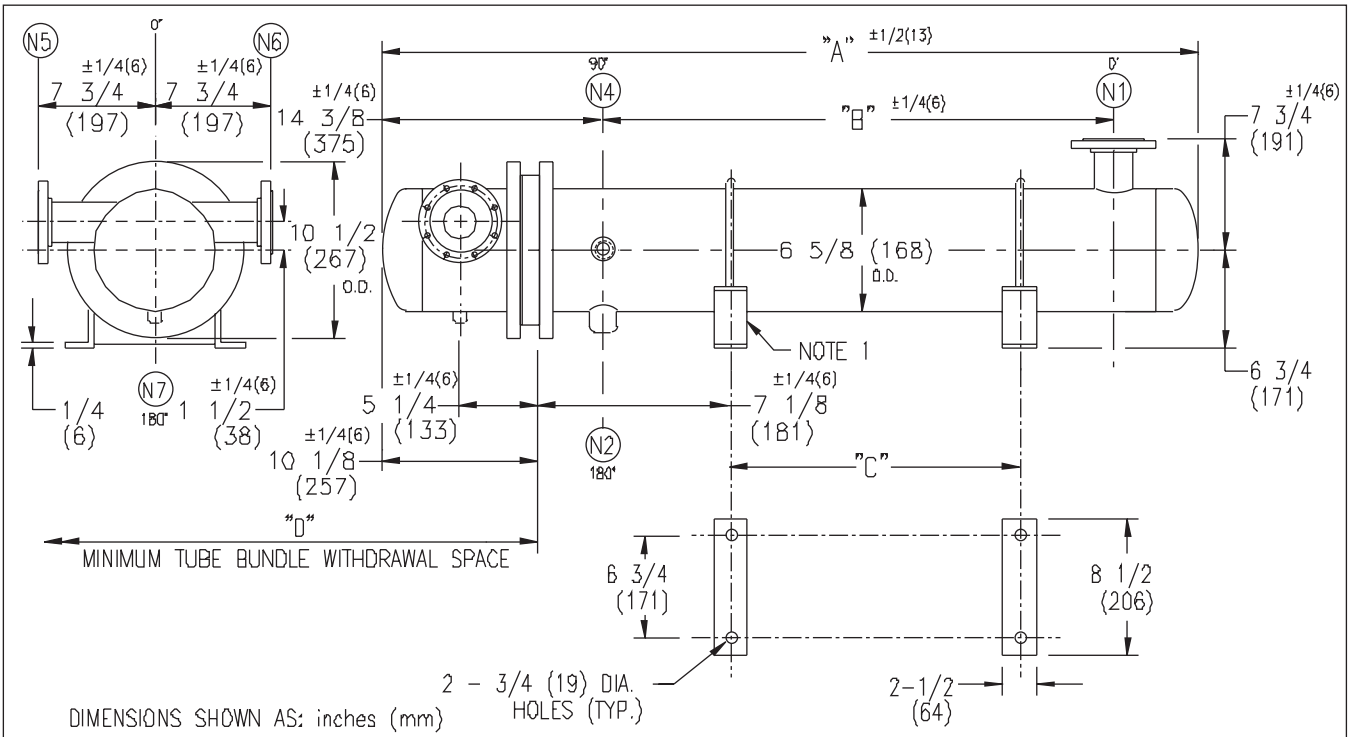


# ARMSTRONG®



EXCHANGER SIZE *—BAFFLE SPACING	DIMENSIONS											
	A		B		C		D		N1		N2	
	inches	mm	inches	mm	inches	mm	inches	mm	inches	mm	inches	mm
WS3H-69-4*-E4	127 5/8	3242	106 3/4	2711	96 1/8	2442	110	2794	4	102	1 1/4	32
WS3H-610-4*-E4	139 5/8	3546	118 3/4	3016	108 1/8	2746	122	3099	4	102	1 1/4	32
WS3H-611-4*-E4	151 5/8	3851	130 3/4	3321	120 1/8	3051	134	3404	4	102	1 1/4	32
WS3H-612-4*-E4	163 5/8	4156	142 3/4	3626	132 1/8	3356	146	3708	4	102	1 1/4	32

NOZZLE SCHEDULE					NOTES: 1. SUPPORTS SUPPLIED ONLY IF SPECIFIED ON ORDER. 2. NOZZLE SIZES SHOWN ARE RECOMMENDED FOR MAX. EXCHANGER LIFE, NO EXTERNAL FORCES APPLY. 3. FABRICATED TO ASME CODE SECTION VIII DIVISION 1 AND LATEST ADDENDA. 4. DRAWING IS NOT TO SCALE. 5. ALL DIM'S ±1/8 (3) UNLESS OTHERWISE SHOWN.
SERVICE	MARK	SHELL SIDE	MARK	TUBE SIDE	
INLET	N1	AS PER TABLE	N5	2 (51) 300# FLG.	
OUTLET	N2	AS PER TABLE	N6	2 (51) 300# FLG.	
			N7	1/2 (13) NPT	
VENT	N4	3/4 (19) NPT			

DESIGN CONDITIONS					CUSTOMER: LOCATION: ENGINEER: ORDER No.: PROJECT/JOB: LOCATION: TAG: (QUOTE # )
	SHELL		TUBES		
DESIGN PRESSURE	300 PSIG	2068 KPa	300 PSIG	2068 KPa	
DESIGN TEMPERATURE	375 °F	191 °C	375 °F	191 °C	
MIN. DESIGN METAL TEMP.	35 °F	1.7 °C	35 °F	1.7 °C	
HYDRO. TEST PRESSURE	450 PSIG	3102 KPa	450 PSIG	3102 KPa	
CONTENTS	STEAM		WATER		

TITLE G.A. 300 LB. WS SERIES HEAT EXCHANGERS	A R M S T R O N G				NUMBER WS3H-6-4P-E4(4)	REV.
DATE: 12 / 11 / 00 BY: J.R.	TORONTO - CANADA TEL: (416) 755-2291	MONTREAL - CANADA TEL: (514) 421-2424	BUFFALO - N. Y. TEL: (716) 693-8813	COLCHESTER - U.K. TEL: (44) 120-657-9491		