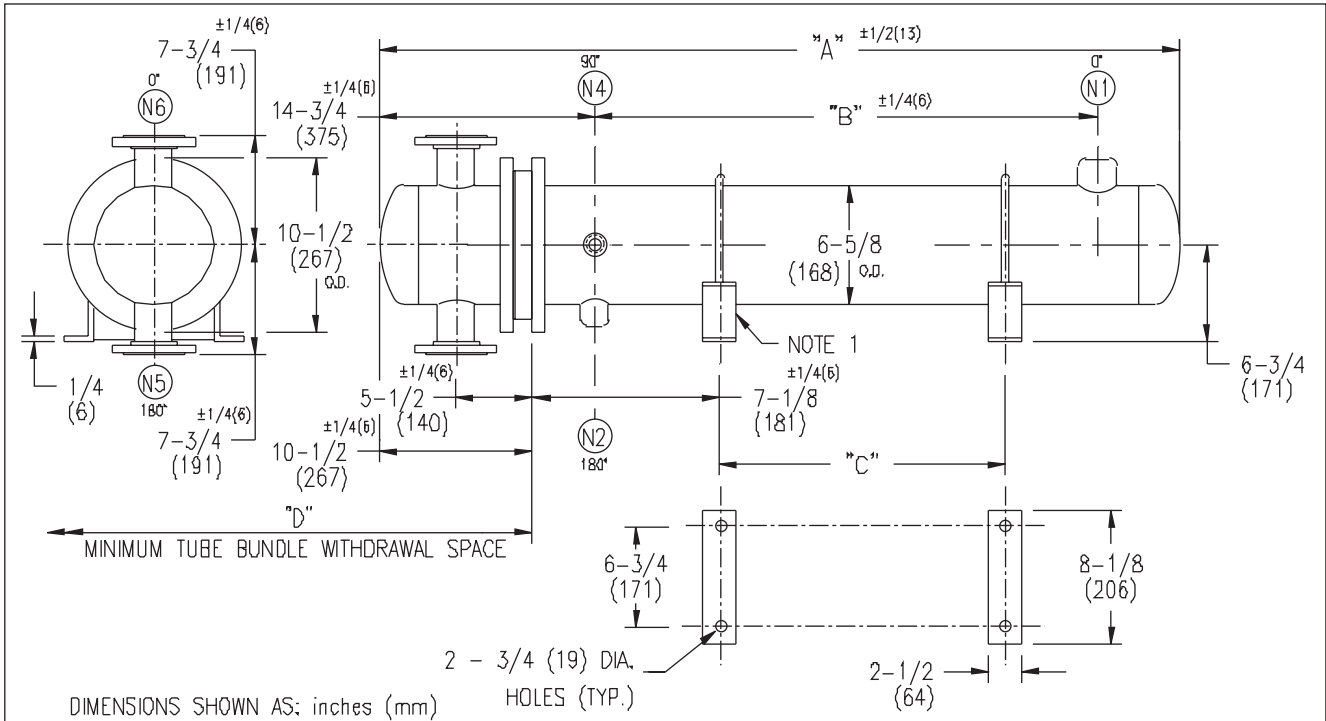


ARMSTRONG®



DIMENSIONS SHOWN AS: inches (mm)

HOLES (TYP.)

EXCHANGER SIZE *BAFFLE SPACING	DIMENSIONS											
	A		B		C		D		N1		N2	
	inches	mm	inches	mm	inches	mm	inches	mm	inches	mm	inches	mm
WS3H-62-2*-E4	44	1118	22 3/4	578	12 1/8	308	26	660	1-1/2	38	1	25
WS3H-63-2*-E4	56	1424	34 3/4	883	24 1/8	613	38	965	2	51	1	25
WS3H-64-2*-E4	68	1727	46 3/4	1187	36 1/8	918	50	1270	2-1/2	64	1	25
WS3H-65-2*-E4	80	2032	58 3/4	1492	48 1/8	1222	62	1574	2-1/2	64	1	25
WS3H-66-2*-E4	92	2337	70 3/4	1797	60 1/8	1527	74	1879	3	76	1	25
WS3H-67-2*-E4	104	2642	82 3/4	2102	72 1/8	1832	86	2184	3	76	1	25
WS3H-68-2*-E4	116	2946	94 3/4	2407	84 1/8	2137	98	2489	3	76	1	25

NOZZLE SCHEDULE

SERVICE	MARK	SHELL SIDE	MARK	TUBE SIDE
INLET	N1	AS PER TABLE	N5	2 (51) 300# FLG.
OUTLET	N2	AS PER TABLE	N6	2 (51) 300# FLG.
VENT	N4	3/4 (19) NPT		

- NOTES: 1. SUPPORTS SUPPLIED ONLY IF SPECIFIED ON ORDER.
 2. NOZZLE SIZES SHOWN ARE RECOMMENDED FOR MAX. EXCHANGER LIFE, NO EXTERNAL FORCES APPLY.
 3. FABRICATED TO ASME CODE SECTION VIII DIVISION 1 AND LATEST ADDENDA.
 4. DRAWING IS NOT TO SCALE.
 5. ALL DIMN'S ±1/8 (3) UNLESS OTHERWISE SHOWN.

DESIGN CONDITIONS

	SHELL		TUBES	
DESIGN PRESSURE	300 PSIG	2068 KPa	300 PSIG	2068 KPa
DESIGN TEMPERATURE	375 °F	191 °C	375 °F	191 °C
MIN. DESIGN METAL TEMP.	35 °F	1.7 °C	35 °F	1.7 °C
HYDRD. TEST PRESSURE	450 PSIG	3102 KPa	450 PSIG	3102 KPa
CONTENTS	STEAM		WATER	

CUSTOMER:

LOCATION:

ENGINEER:

ORDER No.:

PROJECT/JOB:

LOCATION:

TAG:

(QUOTE #)

TITLE	A R M S T R O N G				NUMBER	REV.
G.A 300 LB. WS SERIES HEAT EXCHANGERS	TORONTO - CANADA	MONTREAL - CANADA	BUFFALO - N. Y.	COLCHESTER - U.K.	WS3H-6-2P-E4(3)	
DATE: 12 / 11 / 00 BY: J.R.	TEL : (416) 755-2291	TEL : (514) 421-2424	TEL: (716) 693-8813	TEL: (44) 120-657-9491		