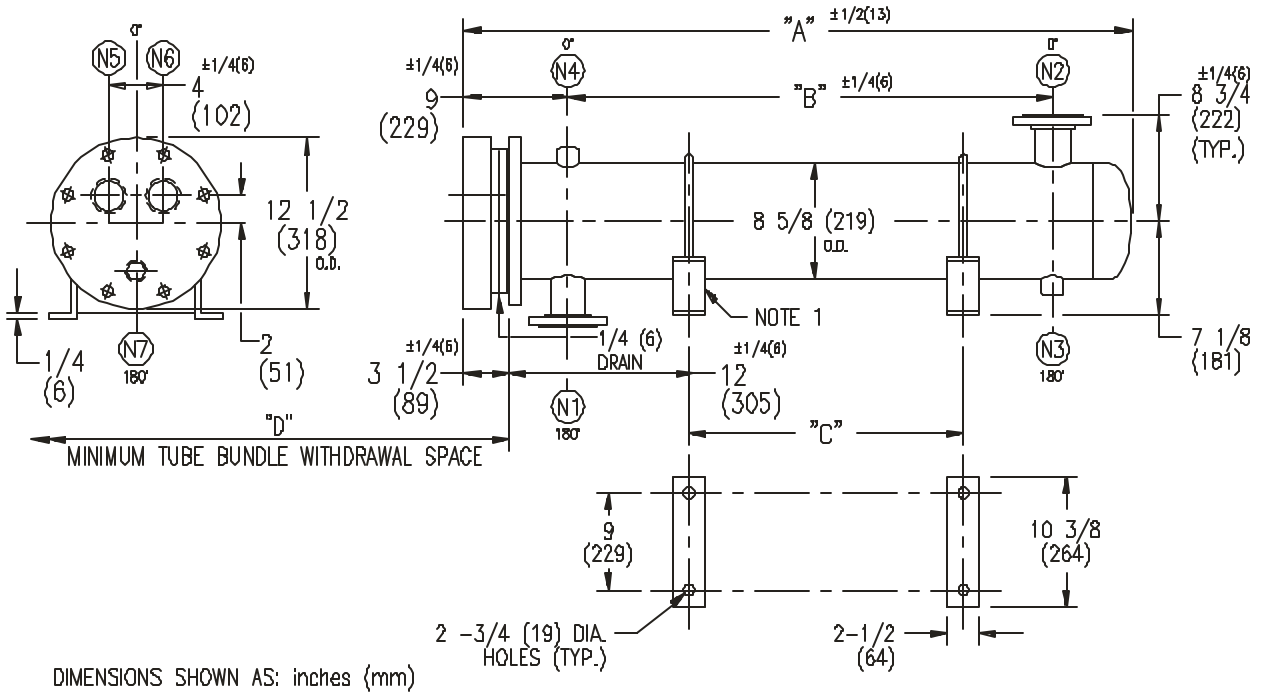


# ARMSTRONG®



DIMENSIONS SHOWN AS: inches (mm)

EXCHANGER SIZE *-BAFFLE SPACING	DIMENSIONS											
	A		B		C		D		N1		N2	
	inches	mm	inches	mm	inches	mm	inches	mm	inches	mm	inches	mm
WX-83-4*-3	41 1/4	1048	26	660	15	381	40	1016	4	102	4	102
WX-84-4*-3	53 1/4	1353	38	965	27	686	52	1321	4	102	4	102
WX-85-4*-3	65 1/4	1657	50	1270	39	991	64	1626	4	102	4	102
WX-86-4*-3	77 1/4	1962	62	1575	51	1295	76	1930	4	102	4	102
WX-87-4*-3	89 1/4	2267	74	1880	63	1600	88	2235	4	102	4	102
WX-88-4*-3	101 1/4	2572	86	2184	75	1905	100	2540	4	102	4	102
WX-89-4*-3	113 1/4	2877	98	2489	87	2210	112	2845	4	102	4	102
WX-810-4*-3	125 1/4	3181	110	2794	99	2515	124	3150	4	102	4	102
WX-811-4*-3	137 1/4	3486	122	3099	111	2819	136	3454	4	102	4	102
WX-812-4*-3	149 1/4	3791	134	3404	123	3124	148	3759	4	102	4	102
WX-813-4*-3	161 1/4	4096	146	3708	135	3429	160	4064	4	102	4	102
WX-814-4*-3	173 1/4	4401	158	4013	147	3734	172	4369	4	102	4	102

### NOZZLE SCHEDULE

SERVICE	MARK	SHELL SIDE	MARK	TUBE SIDE
INLET	N1	AS PER TABLE	N5	2 (51) NPT
OUTLET	N2	AS PER TABLE	N6	2 (51) NPT
DRAIN	N3	1/2 (13) NPT	N7	1/2 (13) NPT
VENT	N4	3/4 (19) NPT		

- NOTES:
1. SUPPORTS SUPPLIED ONLY IF SPECIFIED ON ORDER.
  2. NOZZLE SIZES SHOWN ARE RECOMMENDED FOR MAX. EXCHANGER LIFE, NO EXTERNAL FORCES APPLY.
  3. FABRICATED TO ASME CODE SECTION VIII DIVISION 1 AND LATEST ADDENDA.
  4. DRAWING IS NOT TO SCALE.
  5. ALL DIM'S ±1/8 (3) UNLESS OTHERWISE SHOWN.

### DESIGN CONDITIONS

	SHELL		TUBES	
DESIGN PRESSURE	150 PSIG	1034 KPa	150 PSIG	1034 KPa
DESIGN TEMPERATURE	375 °F	191 °C	375 °F	191 °C
MIN DESIGN METAL TEMP.	35 °F	1.7 °C	35 °F	1.7 °C
HYDRO. TEST PRESSURE	225 PSIG	1551 KPa	225 PSIG	1551 KPa
CONTENTS	WATER		WATER	

CUSTOMER:  
LOCATION:

ENGINEER:  
ORDER No.:  
PROJECT/JOB:  
LOCATION:

TAG: (QUOTE # )

TITLE	A R M S T R O N G				NUMBER	REV.
G A 150 LB. WX SERIES HEAT EXCHANGERS	TORONTO - CANADA	MONTREAL - CANADA	BUFFALO - N. Y.	COLCHESTER - U.K.	WX-8-4P-3(4)	
DATE 12/01/94 BY: D.C.R.	TEL: (416) 755-2281	TEL: (514) 421-2424	TEL: (716) 683-8813	TEL: (44) 120-657-8491		