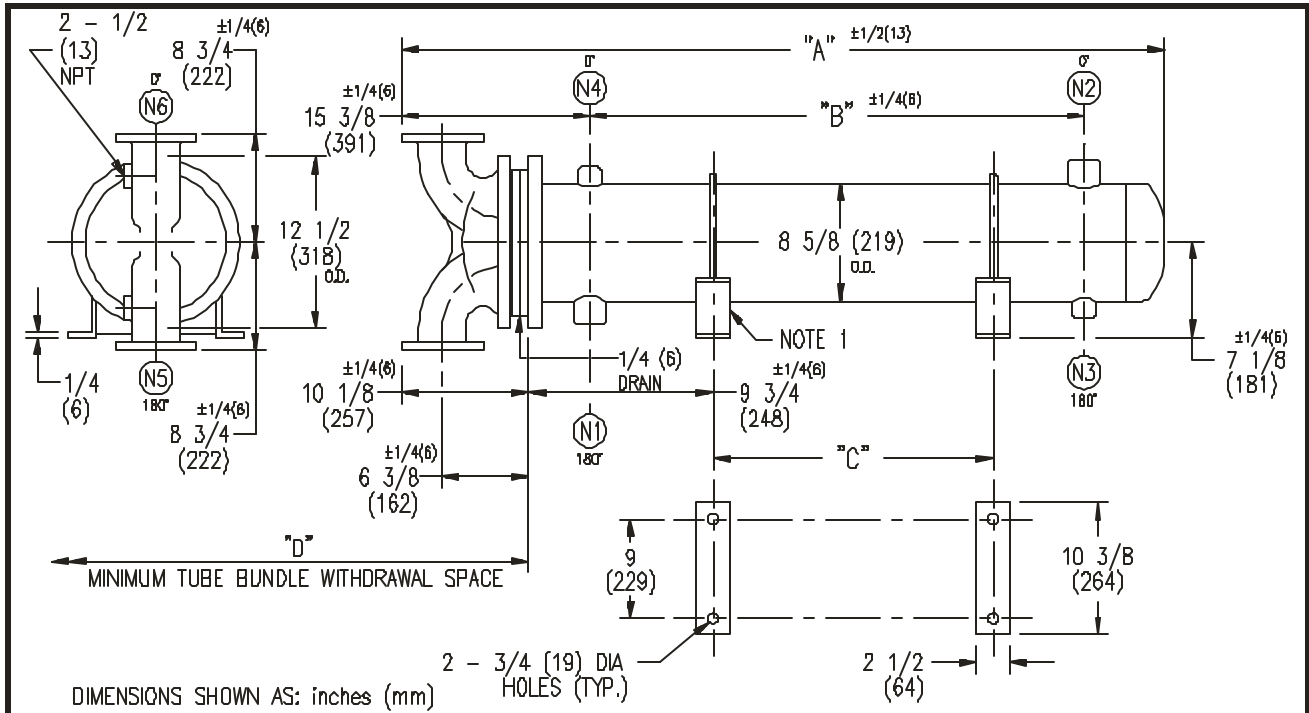


ARMSTRONG®



| EXCHANGER SIZE * - BAFFLE SPACING | DIMENSIONS | | | | | | | | | | | |
|--------------------------------------|------------|------|---------|------|--------|------|--------|------|--------|----|--------|----|
| | A | | B | | C | | D | | N1 | | N2 | |
| | inches | mm | inches | mm | inches | mm | inches | mm | inches | mm | inches | mm |
| WX-82-2*-2 | 35 7/8 | 911 | 14 1/2 | 368 | 6 | 152 | 27 | 686 | 3 | 76 | 3 | 76 |
| WX-83-2*-2 | 47 7/8 | 1216 | 26 1/2 | 673 | 18 | 457 | 39 | 991 | 3 | 76 | 3 | 76 |
| WX-84-2*-2 | 59 7/8 | 1521 | 38 1/2 | 978 | 30 | 762 | 51 | 1295 | 3 | 76 | 3 | 76 |
| WX-85-2*-2 | 71 7/8 | 1826 | 50 1/2 | 1283 | 42 | 1067 | 63 | 1600 | 3 | 76 | 3 | 76 |
| WX-86-2*-2 | 83 7/8 | 2130 | 62 1/2 | 1588 | 54 | 1372 | 75 | 1905 | 3 | 76 | 3 | 76 |
| WX-87-2*-2 | 95 7/8 | 2435 | 74 1/2 | 1892 | 66 | 1676 | 87 | 2210 | 3 | 76 | 3 | 76 |
| WX-88-2*-2 | 107 7/8 | 2740 | 86 1/2 | 2197 | 78 | 1981 | 99 | 2515 | 3 | 76 | 3 | 76 |
| WX-89-2*-2 | 119 7/8 | 3045 | 98 1/2 | 2502 | 90 | 2286 | 111 | 2819 | 3 | 76 | 3 | 76 |
| WX-810-2*-2 | 131 7/8 | 3350 | 110 1/2 | 2807 | 102 | 2591 | 123 | 3124 | 3 | 76 | 3 | 76 |
| WX-811-2*-2 | 143 7/8 | 3654 | 122 1/2 | 3112 | 114 | 2896 | 135 | 3429 | 3 | 76 | 3 | 76 |
| WX-812-2*-2 | 155 7/8 | 3959 | 134 1/2 | 3416 | 126 | 3200 | 147 | 3734 | 3 | 76 | 3 | 76 |
| WX-813-2*-2 | 167 7/8 | 4264 | 146 1/2 | 3721 | 138 | 3505 | 159 | 4039 | 3 | 76 | 3 | 76 |
| WX-814-2*-2 | 179 7/8 | 4569 | 158 1/2 | 4026 | 150 | 3810 | 171 | 4343 | 3 | 76 | 3 | 76 |

| NOZZLE SCHEDULE | | | | |
|-----------------|------|--------------|------|------------|
| SERVICE | MARK | SHELL SIDE | MARK | TUBE SIDE |
| INLET | (N1) | AS PER TABLE | (N5) | 3 (76) FLG |
| OUTLET | (N2) | AS PER TABLE | (N6) | 3 (76) FLG |
| DRAIN | (N3) | 1/2 (13) NPT | | |
| VENT | (N4) | 3/4 (19) NPT | | |

NOTES: 1. SUPPORTS SUPPLIED ONLY IF SPECIFIED ON ORDER
 2. NOZZLE SIZES SHOWN ARE RECOMMENDED FOR MAX. EXCHANGER LIFE, NO EXTERNAL FORCES APPLY.
 3. FABRICATED TO ASME CODE SECTION VIII DIVISION 1 AND LATEST ADDENDA.
 4. DRAWING IS NOT TO SCALE
 5. ALL DIM'S ±1/8 (3) UNLESS OTHERWISE SHOWN.

| DESIGN CONDITIONS | | | | |
|------------------------|----------|----------|----------|----------|
| | SHELL | | TUBES | |
| DESIGN PRESSURE | 150 PSIG | 1034 KPa | 150 PSIG | 1034 KPa |
| DESIGN TEMPERATURE | 375 °F | 191 °C | 375 °F | 191 °C |
| MIN. DESIGN METAL TEMP | 35 °F | 1.7 °C | 35 °F | 1.7 °C |
| HYDRO. TEST PRESSURE | 225 PSIG | 1551 KPa | 300 PSIG | 2068 KPa |
| CONTENTS | WATER | | WATER | |

CUSTOMER:
 LOCATION:
 ENGINEER:
 ORDER No.:
 PROJECT/JOB:
 LOCATION:
 TAG: (QUOTE #)

| | | | | | | |
|---|--------------------------------------|---------------------------------------|-------------------------------------|--|----------------------|------|
| TITLE: GA 150 LB. WX SERIES HEAT EXCHANGERS | A R M S T R O N G | | | | NUMBER: WX-8-2P-2(3) | REV. |
| DATE: 12 / 01 / 94 BY: D.C.R | TORONTO - CANADA TEL: (416) 756-2281 | MONTREAL - CANADA TEL: (514) 421-2424 | BUFFALO - N. Y. TEL: (716) 683-8813 | COLCHESTER - U.K. TEL: (44) 120-657-9491 | | |