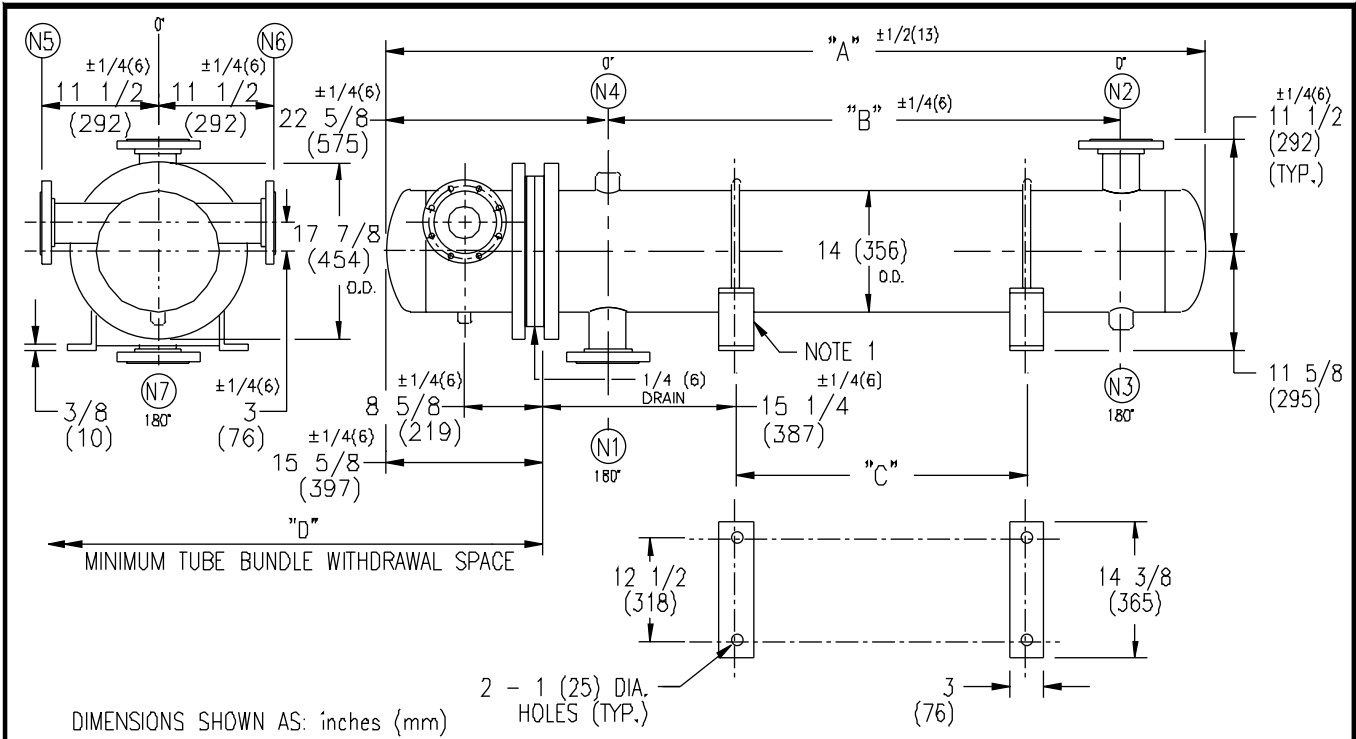


ARMSTRONG®



DIMENSIONS SHOWN AS: inches (mm)

EXCHANGER SIZE *BAFFLE SPACING	DIMENSIONS											
	A		B		C		D		N1		N2	
	inches	mm	inches	mm	inches	mm	inches	mm	inches	mm	inches	mm
WX-143-4*-4	53 5/8	1362	23	584	10	254	40	1016	4	102	4	102
WX-144-4*-4	65 5/8	1667	35	889	22	559	52	1321	4	102	4	102
WX-145-4*-4	77 5/8	1972	47	1194	34	864	64	1626	4	102	4	102
WX-146-4*-4	89 5/8	2276	59	1499	46	1168	76	1930	4	102	4	102
WX-147-4*-4	101 5/8	2581	71	1803	58	1473	88	2235	4	102	4	102
WX-148-4*-4	113 5/8	2886	83	2108	70	1778	100	2540	4	102	4	102
WX-149-4*-4	125 5/8	3191	95	2413	82	2083	112	2845	4	102	4	102
WX-1410-4*-4	137 5/8	3496	107	2718	94	2388	124	3150	4	102	4	102
WX-1411-4*-4	149 5/8	3800	119	3023	106	2692	136	3454	4	102	4	102
WX-1412-4*-4	161 5/8	4105	131	3327	118	2997	148	3759	4	102	4	102
WX-1413-4*-4	173 5/8	4410	143	3632	130	3302	160	4064	4	102	4	102
WX-1414-4*-4	185 5/8	4715	155	3937	142	3607	172	4369	4	102	4	102
WX-1415-4*-4	197 5/8	5020	167	4242	154	3912	184	4674	4	102	4	102

NOZZLE SCHEDULE

SERVICE	MARK	SHELL SIDE	MARK	TUBE SIDE
INLET	N1	AS PER TABLE	N5	4 (102) FLG
OUTLET	N2	AS PER TABLE	N6	4 (102) FLG
DRAIN	N3	1/2 (13) NPT	N7	1/2 (13) NPT
VENT	N4	3/4 (19) NPT		

- NOTES: 1. SUPPORTS SUPPLIED ONLY IF SPECIFIED ON ORDER.
 2. NOZZLE SIZES SHOWN ARE RECOMMENDED FOR MAX. EXCHANGER LIFE, NO EXTERNAL FORCES APPLY.
 3. FABRICATED TO ASME CODE SECTION VIII DIVISION 1 AND LATEST ADDENDA.
 4. DRAWING IS NOT TO SCALE.
 5. ALL DIMN'S ±1/8 (3) UNLESS OTHERWISE SHOWN.

DESIGN CONDITIONS

	SHELL		TUBES	
	DESIGN PRESSURE	150 PSIG	1034 KPa	150 PSIG
DESIGN TEMPERATURE	375 °F	191 °C	375 °F	191 °C
MIN. DESIGN METAL TEMP.	40 °F	4.4 °C	40 °F	4.4 °C
HYDRO. TEST PRESSURE	225 PSIG	1551 KPa	225 PSIG	1551 KPa
CONTENTS	WATER		WATER	

CUSTOMER:

LOCATION:

ENGINEER:

ORDER No.:

PROJECT/JOB:

LOCATION:

TAG:

(QUOTE #)

TITLE G.A. 150 LB. WX SERIES HEAT EXCHANGERS	A R M S T R O N G				NUMBER WX-14-4P-4(4)	REV. A ECO #9172 APRIL 16/03 J.R.
DATE: 12 / 01 / 94	BY: D.C.R.	TORONTO - CANADA TEL: (416) 755-2291	MONTREAL - CANADA TEL: (514) 421-2424	BUFFALO - N. Y. TEL: (716) 693-8813	COLCHESTER - U.K. TEL: (44) 120-657-9491	