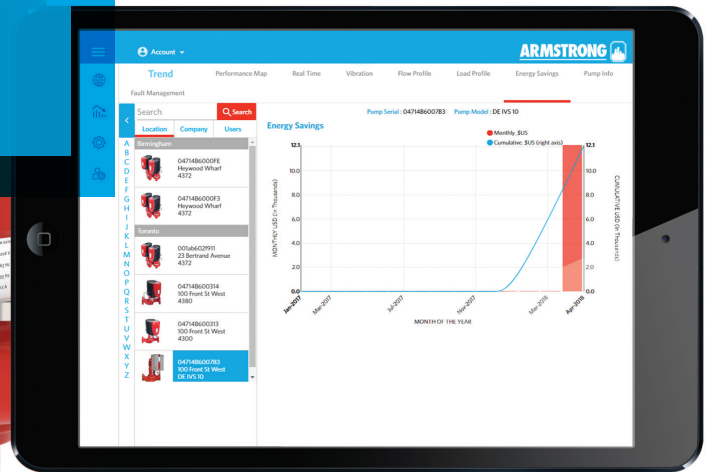
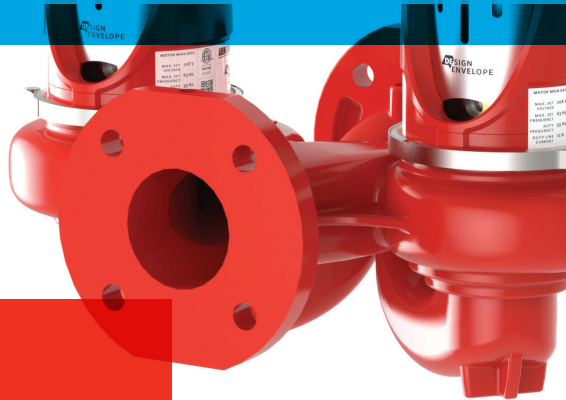




## PUMP MANAGER, CLOUD SERVICE

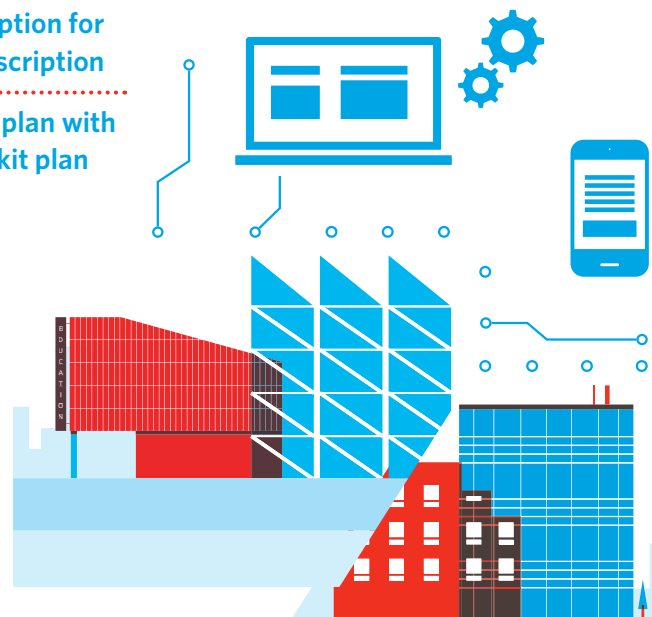


A cloud-based  
Active Performance  
Management  
service for Design  
Envelope pumps

### WHAT'S INCLUDED:

1-year Pump Manager subscription for  
up to 8 pumps on a single subscription

Includes 1-year SIM card data plan with  
pre-paid, secure connectivity kit plan



# BENEFITS IN THE DIFFERENT STAGES OF THE BUILDING LIFECYCLE:

## SPECIFICATION

From day one, ensure:

System resilience through Active Performance Management

Asset and system operations are aligned with design intent

Structured stakeholder collaboration through data-driven accountability

Deployment of data reporting systems to validate future designs

## CONSTRUCTION

Troubleshoot faster and minimize call-backs

Demonstrate proof of job completion with digital report

Support dispute resolution in case of equipment damage from system failure

Save up to 15% in service-related costs

## COMMISSIONING

Data analytics ensure system optimization from day one

Reports based on recorded data confirm equipment performance

## OPERATION & MAINTENANCE

**Peace of Mind** - your equipment is being actively managed

**Visibility** - asset performance records let you identify, troubleshoot and resolve issues before they become urgent

**Access** - connect with the appropriate support network to resolve issues quickly

**Customer Satisfaction** - improved asset reliability, availability and performance ensure occupant comfort

**Savings** - reduce energy costs by 30% and maintenance costs by 50%

